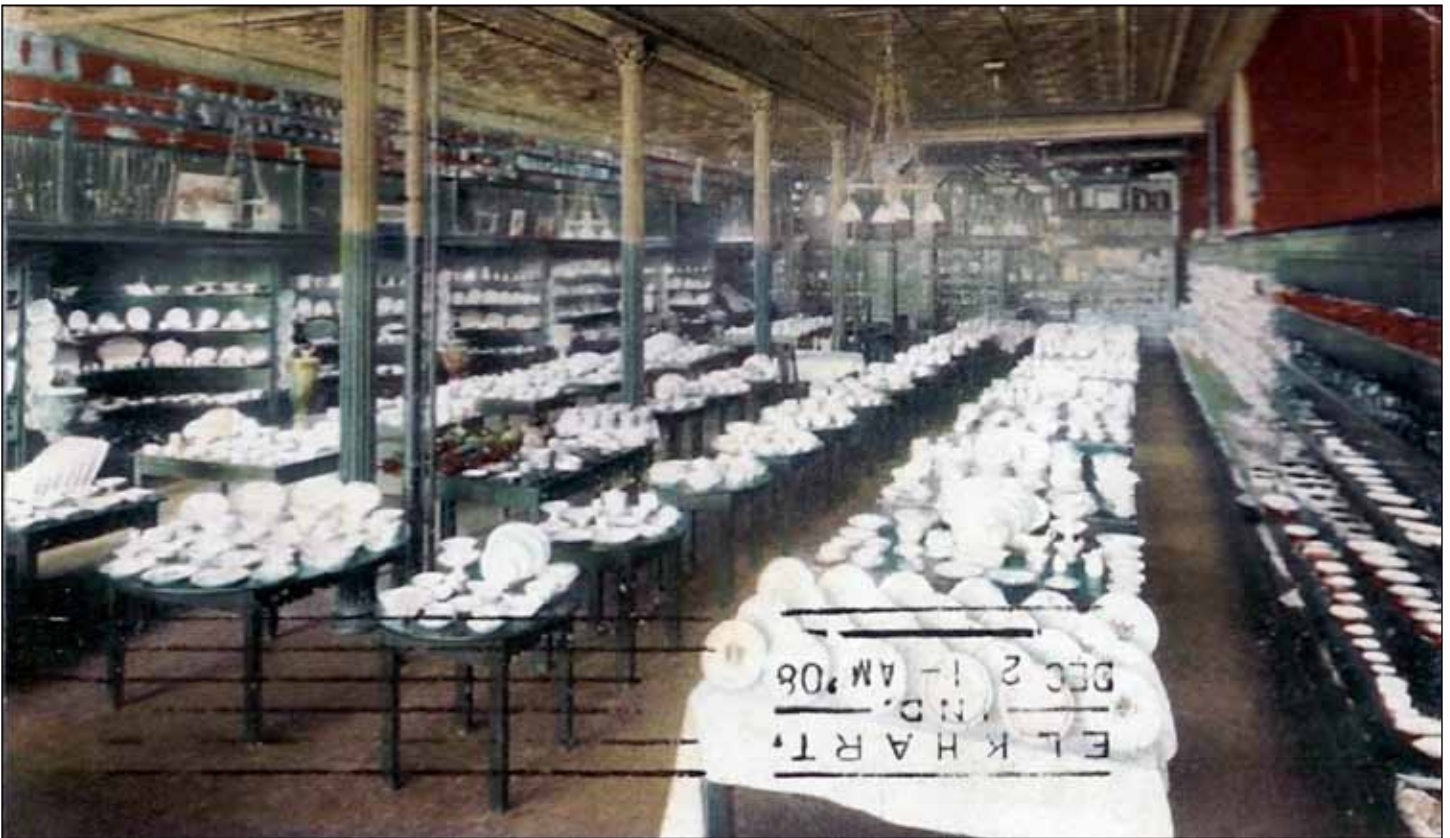


FROM EARTH TO ART: DISTRIBUTOR ADDENDA

Additions to list beginning on page 417.

ALBERT PICK & CO.

In 1917, A. G. Hallgren was Pick's china buyer, who visited the Lamberton Works on buying trips.



Circa 1908 view of Albert Pick & Co. chinaware showroom in Chicago.

H. LEH & CO.

626 W. Hamilton St. Allentown, PA.

Founded April 25, 1850, by 20-year-old Herry Leh as a mens's clothing store. By 1911, it was a 5-story full-line department store. In 1917 G. H. Leh was the buyer for the House Furnishing Department. Around 1931 they supplied Scammell's Lamberton China to the Allentown Hospital.

The downtown store closed in 1994.

HAHNE AND COMPANY 609 BROAD ST., NEWARK, NJ.

Founded 1858 by Julius Hahne. 1901, 4-story store on Broad Street opened.

Supplied Scammell Lamberton China, backstamped with "Hahne and Co., Newark, NJ, 1927."

Store operated two restaurants, Pine Room on 1st floor, Maple Room in basement, which could have used Maddock or Scammell china. China department was located on 3rd floor. Store closed 1987.

Information sources: Oval bowls with backstamp on eBay, 2/9/15. departmentstoremuseum.blogspot.com. www.en.wikipedia.org.

LIT BROTHERS

Philadelphia ,PA Department Store.

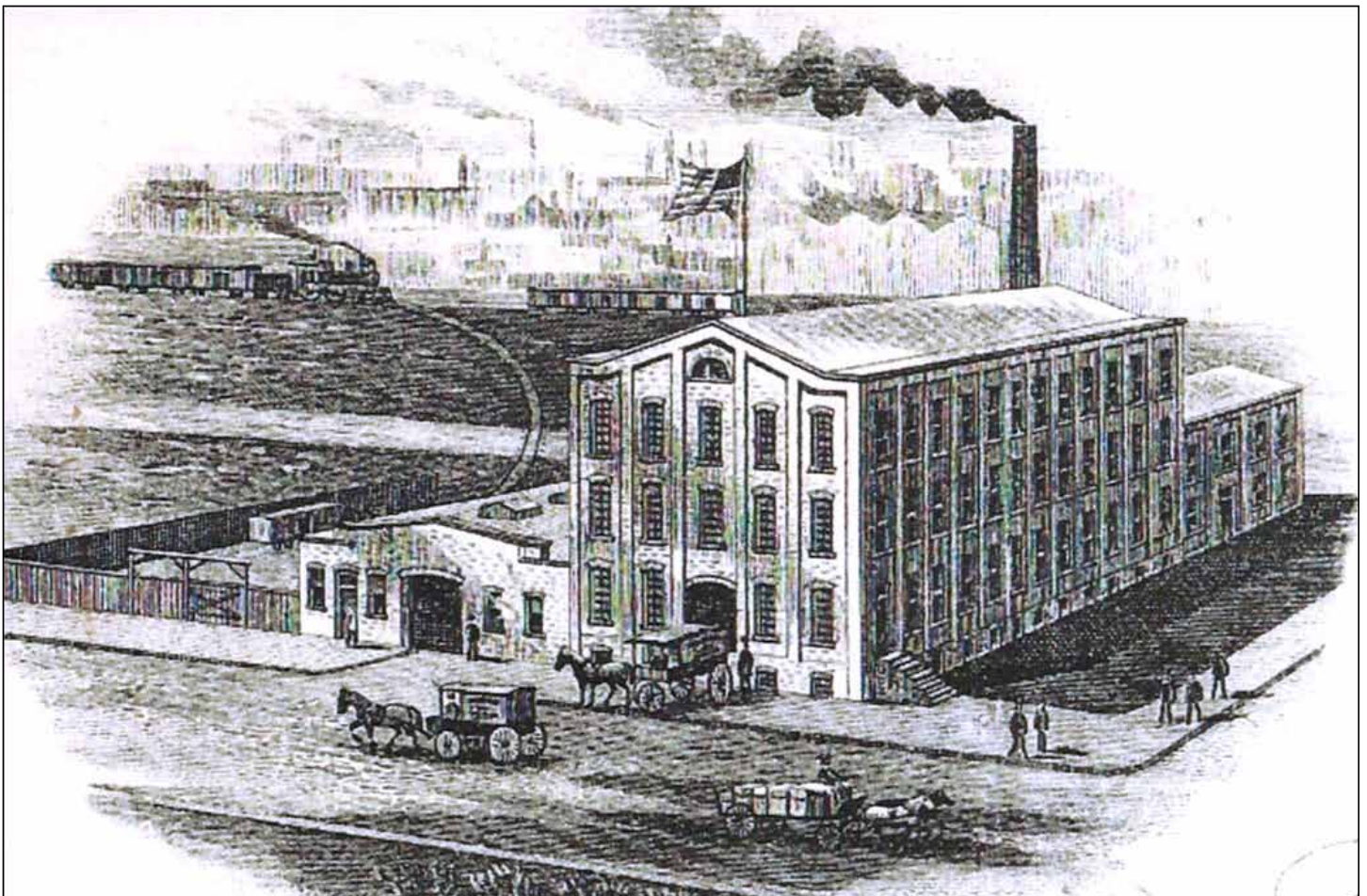
Supplied Lamberton china to Locust Club of Philadelphia, which was founded in 1920.

STAR PRODUCTS CO.

80-88 Washington St., Wilkes Barre, PA.

Founded by Edward I. Vergari (b 1915-d 2007) & William Bonn (b 1925-d 1997)In operation as early as 1947. Still operating in 1978.

Carried an open stock line of Scammell Lenape Trenton China backstamped with the Star Products Co. name.



1915 view of Tongue Bros. as it appeared on billhead.

Information source: Compartment plate and cereal bowls on eBay, 1/22/16.

R. E. TONGUE & BROS. CO., INC.

Allegheny Ave., Amber & Collins streets., Philadelphia, PA.

Founded around 1910 by Richard E., Francis (Frank), William C., & George J. Tongue. Began as a wholesale distributor of glass lamp chimneys. Expanded into Lustre brand canning jars and then by the 1930s, Big Chief Flypaper. They were a distributor of Scammell's Trenton China. The one known example is a black transfer border design without a custom crest.

